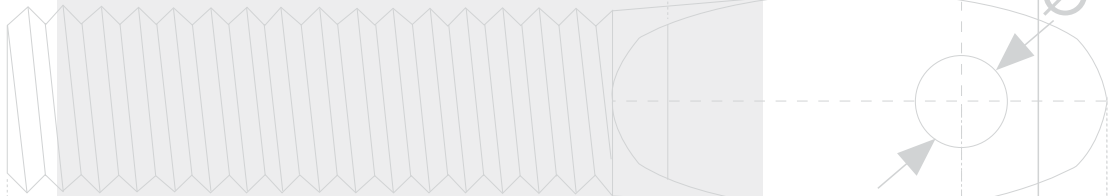




HAZ METAL FIXING SYSTEMS



A



COMPANY BROCHURE



HAZ METAL FIXING SYSTEMS

Company Profile

Introduction

Haz Metal is located in Iskenderun, in the south of Turkey, based in an area of 17.000 m². The company provides services in the design and production of stainless steel fixing systems for natural stone installation and a variety of products used in construction.

The company's objective is to assist and advise its clients in choosing the most suitable fixing systems for their requirements and to provide them with quality products and the supply of the required materials. Haz Metal has dedicated itself to supplying customers with easy to use, secure and economic fixing systems.

This principle is shared with its sister company, Haz Marble in work experience and quality standards. Haz Marble is one of the leading installation companies with worldwide experience since 1978 of more than 5.000.000 m² of internal and external natural stone installation.

Along with this principle, Haz Metal has organized a technical department to design and produce fixing systems in accordance with international standards. The innovative design and production techniques offer practical and economic solutions to solve every possible problem within the scope of fixing systems.

As a supplier of fixing systems to major projects around the world, Haz Metal has proven its quality and reliability to its clients. The company enjoys serving the sector and works hard to constantly improve and develop its services.

Product Range

Haz Metal started producing fixing systems in 1993. Haz Metal today has the technical know how and technology to produce all types of natural stone fixing systems used for ventilated stone facades. Haz Metal also produces a variety of fixing systems such as channels, cast - in channels, masonry support anchors and expansion bolts.

Steel structures used for building secondary structures are also designed and produced at Haz Metal. These are designed and produced according to project specifications. Standard and customized production is made to meet the special needs of clients. Products are produced from stainless steel and galvanized steel raw material. Stainless steel grade EN 1.4301 – AISI 304 (A2) and EN 1.4401 – AISI 316 (A4) and galvanized ST37 mild steel are available.

Technical Know-how

With working experience since 1993, Haz Metal's technical staff has an outstanding technical knowledge in the field of fixing systems design and production. This thorough knowledge of stainless steel provides quality and strong production of fixing systems. Cutting, drilling, bending, chamfering, tabbing, rolling, threading and especially, the welding of stainless steel, is carried out to the highest professional standard. Knowledge and experience over the design and structural calculation work enables Haz Metal to provide a technical service for fixing systems for projects of any size.

Production Capacity

With approximately 10.000 m² of production halls, Haz Metal is equipped with more than 100 work stations and has a monthly production capacity of more than 300 tons.

The company has its own workshop where moulds and machine parts are produced. This enables fast and flexible production to supply projects of any size.





HAZ METAL FIXING SYSTEMS

The Haz Metal factory is located in Iskenderun, the southern part of Turkey. Production uses the latest technological methods with ISO 9001 quality control. Total quality management systems have been established for every stage of day to day operations.



The factory is based in an area of 17.000 square meters with an enclosed production area of 10.000 square metres. There are over 100 work stations with a production capacity of more than 300 tons per month.

Haz Metal has the production capacity to supply major projects of any size with high quality fixing systems.

Since 1993, the factory has increased its production capacity to meet the expanding project demand globally. Haz Metal has taken the necessary steps to ensure high quality production with acceptable lead times.

This has been done by establishing state of the art production lines with modern machinery at Haz Metal. The factory is equipped with machines capable of processing any type of cold working production methods on stainless steel.

Haz Metal has its own workshop to produce moulds and dies required for the production of custom designed fixing systems.



• Workshop.



• Hall for production of anchors.



• Hall for production of channels&bolts.



• Eccentric presses.



• Hydromat.



• CNC Part former.



• Shear press.



• Press break.



• Channel roll former.



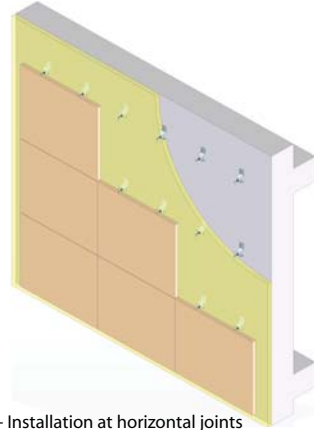
Natural Stone Fixing Systems - Direct fixing

HZ02 Z Anchor fixing system:

- Fixing to concrete with expansion bolts. 20-50 mm stone thicknesses are applicable.
- Projection sizes up to 135mm.
- Recommended loads up to 800 N.
- Installation at horizontal and vertical joints.
- Three dimensional adjustability.



HZ02 Z Anchor



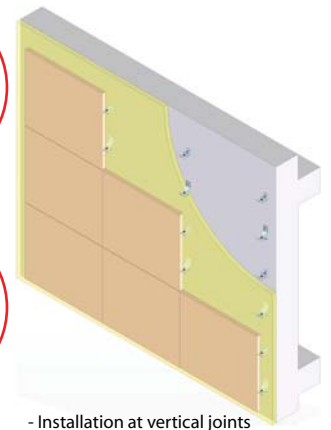
- Installation at horizontal joints



HZ02 Z Anchor



HRS1 Restraint Anchor



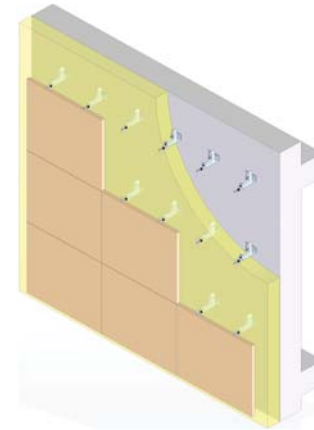
- Installation at vertical joints

AX04 Body Anchor fixing system:

- Fixing to concrete with expansion bolts.
- Projection sizes up to 260 mm.
- Recommended loads up to 1300 N.
- Optimum static performance.
- Economic when installing at high projection.



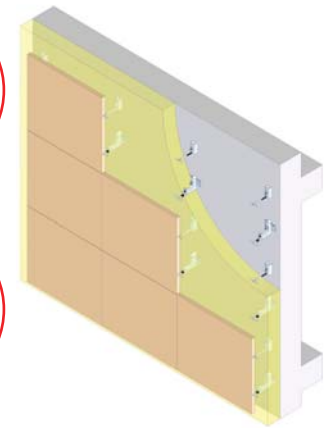
AX04 Body Anchor



HRS3 Restraint Anchor



AX04 Body Anchor

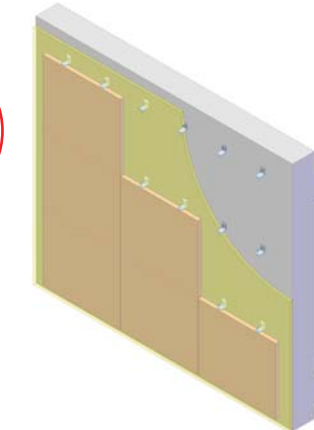


HA L Anchor Fixing system:

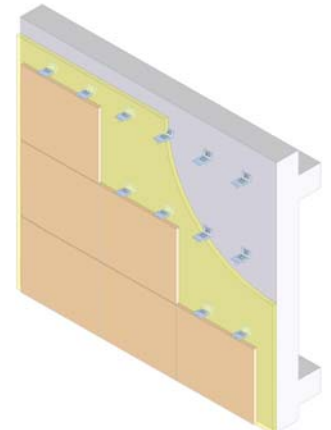
- Fixing to concrete with expansion bolts. Minimum 20 mm and larger stone sizes are applicable.
- Various types to fit a range of loads and projection sizes.
- Installation at horizontal joints only.
- Limited adjustability is available.



HA01 L Anchor



HA04 L Anchor

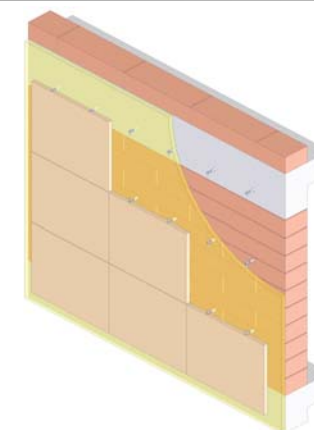


HSD Mortar Anchor fixing system:

- Fixing to masonry with mortar.
- Various types to fit a range of loads and projection sizes.
- Installation at horizontal and vertical joints.
- Three dimensional adjustability.



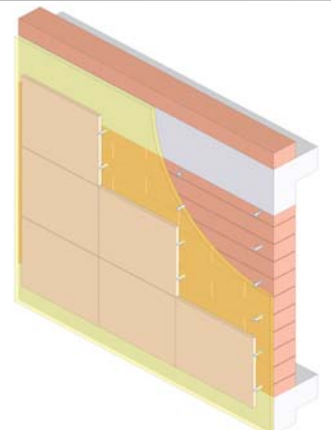
HSD04 Mortar Anchor



HRD03 Mortar Anchor



HSD02 Mortar Anchor

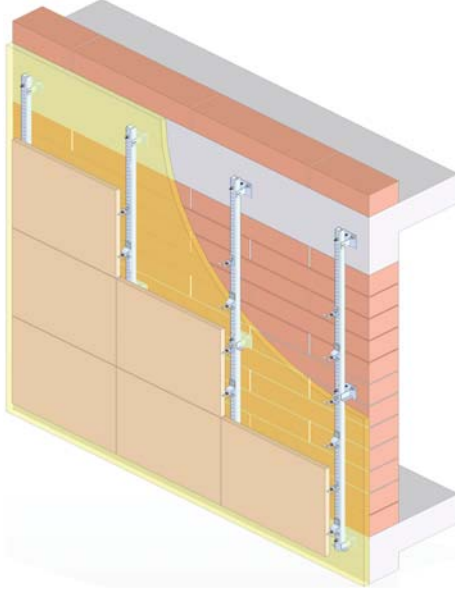




Natural Stone Fixing Systems - Indirect fixing

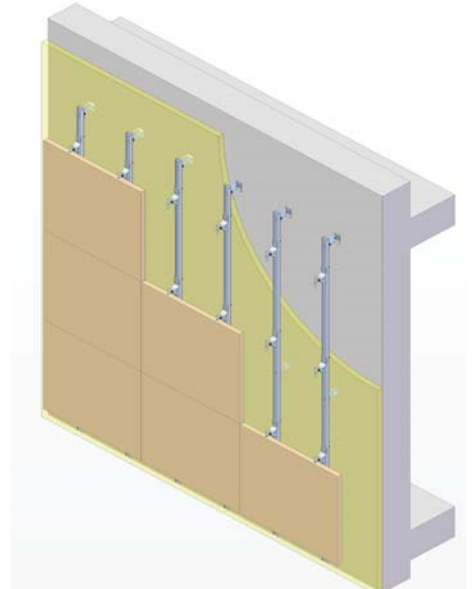
HMPA-HC2 sub channel fixing system:

- High load bearing and adjustable sub channel system.
- Fast and easy fixing of stone slabs.
- Minimum projection size is 90 mm and maximum is 260 mm.
- Ideal for heavy loads and large projection sizes.
- Anchors are fixed to channels with hex bolts and hex nuts.

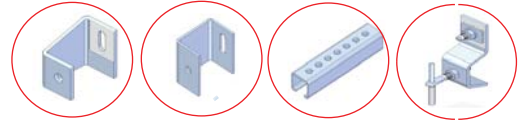


HMPB-HC1 sub channel fixing system:

- Easy to assemble sub channel system.
- Easy to install with non complicated elements.
- Minimum projection size is 110 mm and maximum is 200 mm.
- Ideal for restoration of facades.
- Anchors are fixed to channels with hex bolts and hex nuts.



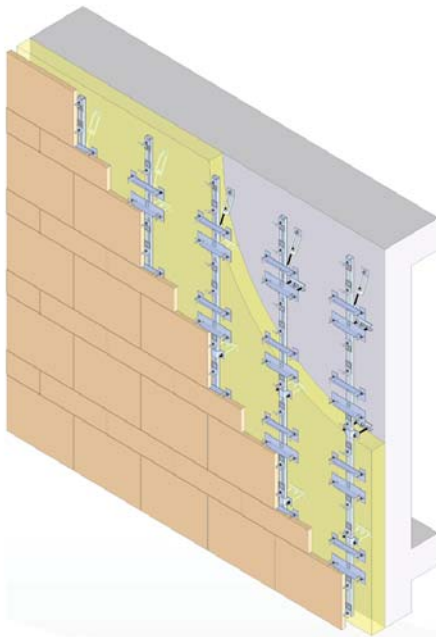
HCSP2 Chan. Sup. **HCRS2** Chan. Rest. **HMPA** U Channel **HZ02** Z Anchor **HRS1** Rest. anchor



HCSP1 Chan. Sup. **HCRS1** Chan. Rest. **HMPB** Channel **HZ02** Z Anchor

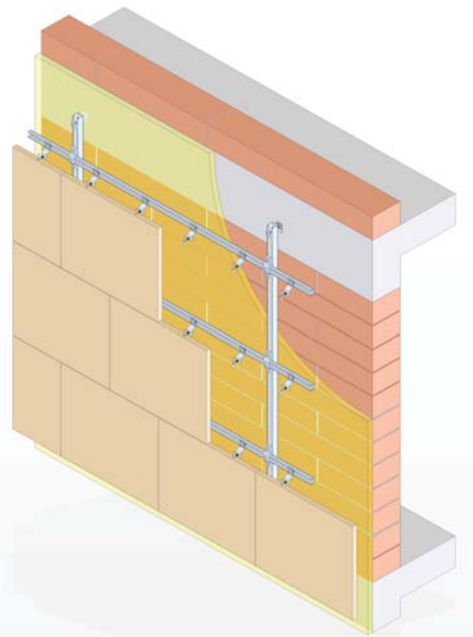
ATS sub channel fixing system:

- Adjustable and easy to use sub channel system.
- Fast and easy fixing of stone slabs.
- Minimum projection size is 160 mm and maximum projection size is 360 mm.
- Ideal for varying projection sizes and slab dimensions.
- Anchors are fixed to toothed channels with lock nuts and hex bolts.



HMPC-HC1H sub channel fixing system:

- Adjustable sub channel system with horizontal channels.
- Quick adjustability at horizontal axis.
- Minimum projection size is 150 mm and maximum is 240 mm.
- Ideal for staggered patterned facades.
- Anchors are fixed to channels with lock nuts and hex bolts.



ATS-A Chan. Sup. **ATS-B** Chan. Rest. **HMPS** Toothed ch. **ATS-HA** Special anc. **ATS-HZ** Z Anchor

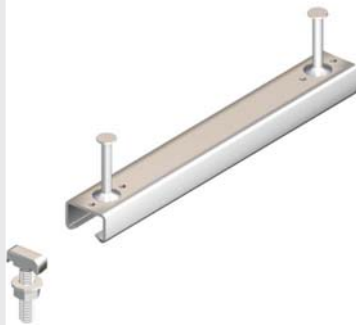


HCSP1 Chan. Sup. **HCRS1** Chan. Rest. **HMPC-41/21** C Channel **HMPC-41/41** C Channel **HZ01** Z Anchor



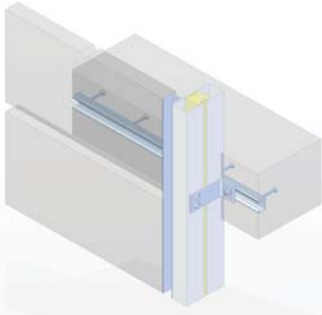
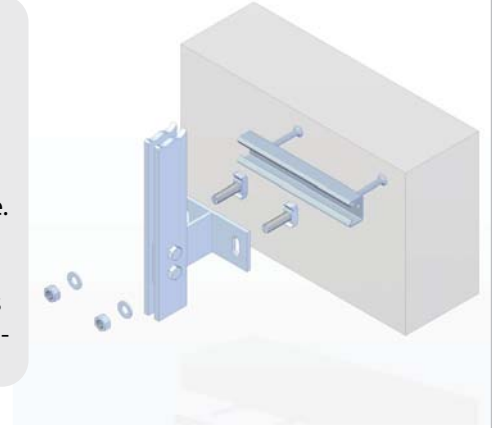
HMPR Cast in Channel Fixing Systems

HMPR Cast in channels with studs and corresponding T head bolts are used for strong and secure connections in to concrete without the use of drilling. Suitable for connections of any type of secondary structures. Loads up to 22.000 N are applicable .

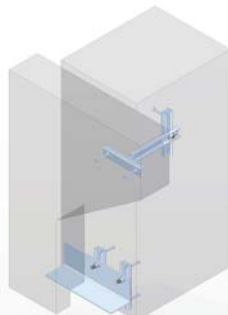


Advantages:

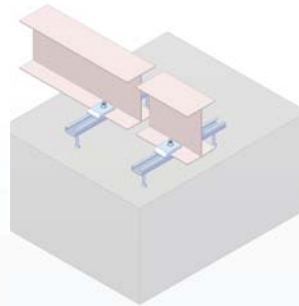
- No drilling on site.
- No noise and vibration of power tools.
- Safe near edges on concrete.
- Adjustable and flexible.
- Safe and secure fixing.
- Quick and easy fixing.
- Applicable for all types of sub structure installation.



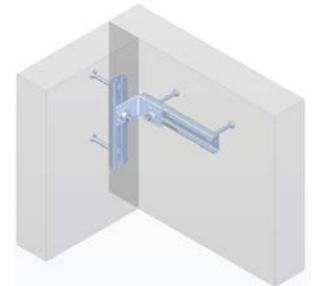
- Installation of glazing curtain walls.



- Installation of natural stone panels



- Connection of upper steel beam.



- Connection of precast concrete components.

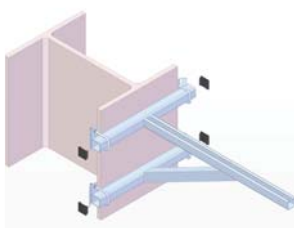
HMP Framing Fixing Systems

HMP Framing systems with channels and various accessories are used to build steel construction for the installation of various types of sub structures. Efficient modular support structures are built quickly and easily. Flexible and low cost application is achieved.



Advantages:

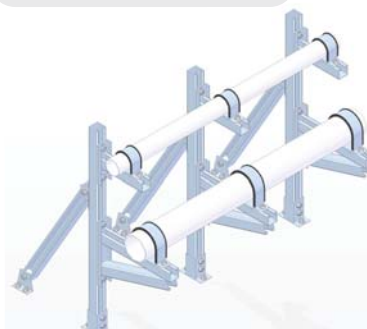
- Fast and Secure fixing.
- No time consuming welding and hole setting.
- No use of welding and drilling equipment.
- Adjustable and non-slip point fixing.
- Cost effective and flexible.
- Quick and easy fixing.



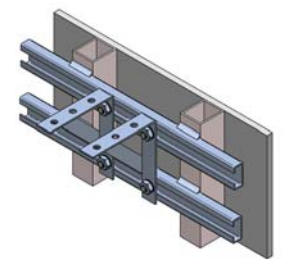
- Assembly made on to steel columns.



- Assembly made on to steel beams.



- Assembly made on to concrete floors.

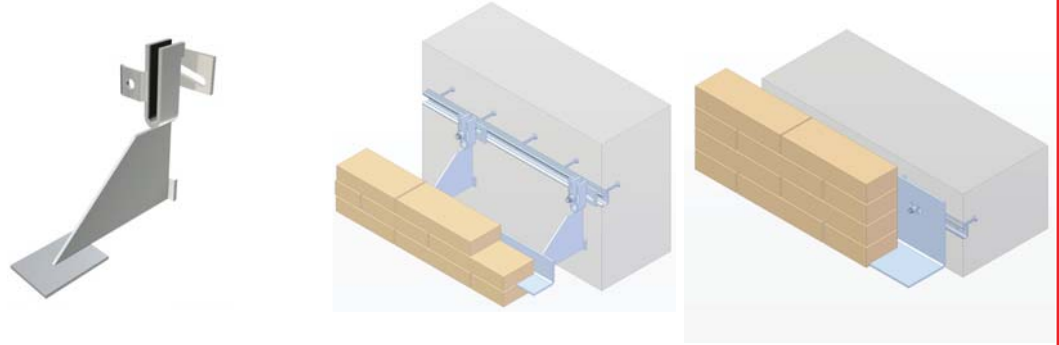


- Assembly made on to steel box channels.



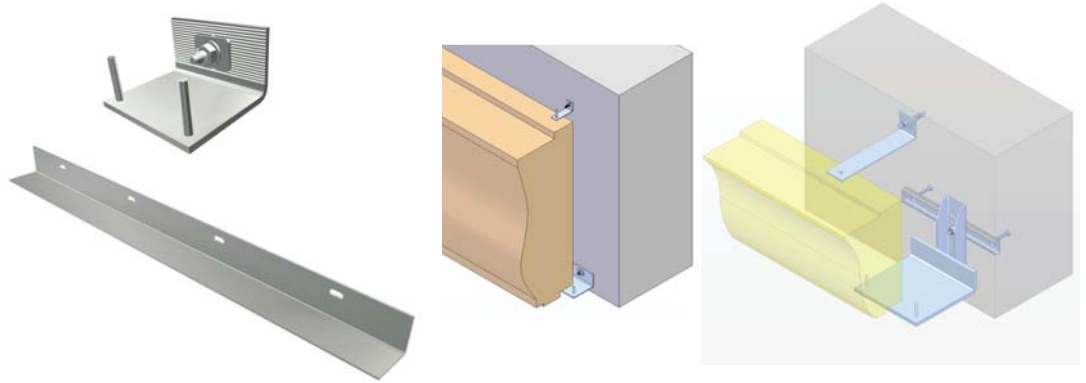
HMS Masonry Support Systems

HMS Masonry support systems are used for the easy and secure installation of brick facades. Variety of types and sizes are produced to meet the wide range of applications required. Production is made in stainless steel & galvanised ST37 steel.



Heavy Duty Support Systems

Heavy duty support systems are specially designed for the installation requirements of heavy load stone slabs, cornices or prefabricated components.



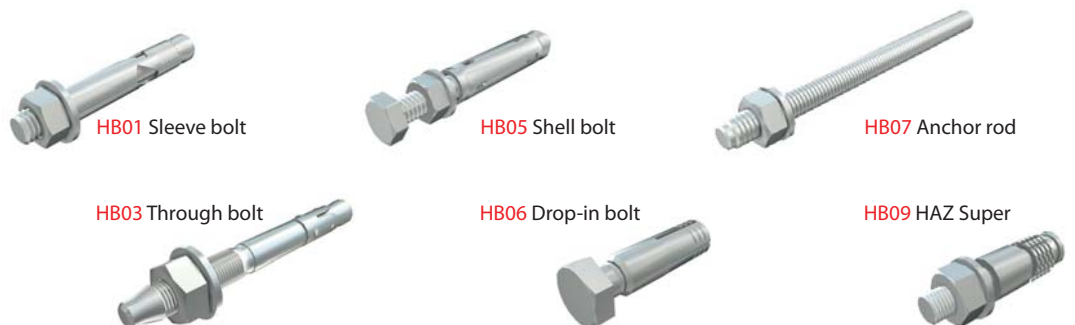
HPCL Pipe clamps

HPCL Pipe clamps and a variety of accessories meet the installation requirement of pipe systems. Production is made in stainless steel & galvanised ST37 steel.



HB Expansion bolts

HB expansion bolts are used for the strong and secure fixing of elements on wall backings. A variety of bolts are available for fixing on to concrete, reinforced and filled masonry and block work walls.





Always at the forefront of fixing technology, HAZ METAL has earned a reputation as the leaders in fixing systems

innovation and are regarded as the one to follow. HAZ METAL fixing systems of today become the standard of tomorrow.

HAZ METAL combines the very latest international technology with its own research and development team to establish a technical excellence within the industry.

HAZ METAL readily embraces the responsibility of a major producer and share its expertise with problem solving solutions.



HAZ METAL SANAYİ VE TİCARET A.Ş.
Şehit er çıracı caddesi no 10
Akçay Sanayi bölgesi 31200 İskenderun
Hatay / Türkiye
Tel: +90 (0) 326 626 20 50
Fax: +90 (0) 326 626 20 45
www.hazmetal.com / info@hazmetal.com

HAZ PAZARLAMA İÇ & DIŞ TİC. A.Ş.
Sarıkanarya sok. Ece apt. No:8/1b
Kozyatağı mah. 34742 Kadıköy
İstanbul / Türkiye
Tel: +90 (0) 216 410 72 26
Fax: +90 (0) 216 410 71 41
hazpazarlama@hazgrp.com

HAZ MARBLE INDUSTRY & TRADE LLC
First Gulf Building Corniche Street
2nd Floor, Flat no: 202 P.O. Box 5721
Abu Dhabi / United Arab Emirates
Tel: +971 (0) 2 622 07 00
Fax: +971 (0) 2 622 17 00
hazuuae@hazmarbleuae.com

HAZ METAL DEUTSCHLAND GmbH
Leonhard Karl Strasse 29
97877 Wertheim / Germany
Tel: +49 (0) 9342 93590
Fax: +49 (0) 9342 93590
www.hazmetal.de/info@hazmetal.de

HAZ INTERNATIONAL Ltd
154 Great North Road Hatfield
Herts. AL9 5JN England
Tel: +44 (0)1707 - 260 180
Fax: +44 (0)1707 -260 190
www.hazuk.co.uk
haz@hazuk.co.uk

HAZ MARBLE QATAR WLL
P.O.BOX 31296 C-Ring road
Doha / Qatar
Tel: +974 (0) 467 26 49
Fax: +974 (0) 467 47 49
tamerx121@gmail.com

HAZ RUS
Tversakaya Street 10
Korpus 2
Moscow 125009